

NEXTEC

2 Camera Drive Recorder

NX-DR W22 PLUS

NX-DR W22



**Made In
Japan**

**200M
Rez**
Front Cam
100MRez
Rear Cam

Multi Rec
Continuous
Event
Manual

WDR
Wide
Dynamic
Range

GPS*

**1.5"
Display**

G sensor*

DC 12/24V

*NX-DR W22 needs option stay HG-GP200 for GPS functions.

F.R.C.

First Radio Communication

NEXTEC

2 camera Drive Recorder

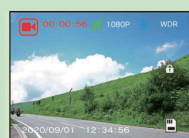
NX-DR W22 PLUS

NX-DR W22

Playback Methods

① In the car

You can check not only live view but also playback recorded videos stored in the drive recorder TF cards with **2.7" display** on the drive recorder itself.



Front Camera



Rear Camera

② From the PC viewer soft

dedicated viewing software for drive-recorders are available in our website. It plays back recorded video. With GPS unit, you can track location of your driving in Google Map.



▲Viewer software
Google Map View▶

*NX-DR W22 needs optional GPS unit "HX-GP200" for activating Google Map function in the viewer software.

Recording Types

① Loop Recording

Powering the driver recorder from accessory power of the car (ex. Sigur Socket), Recording links engine On / Off status and automatically starts and end recording.

② Shock Sensor Recording

If the recorder detects the shock, it creates dedicated folder for detect recording videos.

Recording Time Reference

SD card Memory Size	Front camera Resolution	Loop	Event (Shock / Manual)	Total
8GB	FHD (1920x1080)	35min	15min	50 min
16GB	FHD (1920x1080)	1 hour 10min	30 min	1 hour 40min
32GB	FHD (1920x1080)	2 hour 20min	1 hour	3 hour 20min
8GB	HD (1280x720)	58 min	25 min	1 hour 23min
16GB	HD (1280x720)	1 hour 57min	50 min	2 hour 47min
32GB	HD (1280x720)	3 hour 54min	1 hour 40min	5 hour 34min

Driving Safety Support with GPS

GPS is embedded in Front Camera Mounting Stay (HX-GP200), which extends functions such as auto time adjustment. And it extends PC viewer software functions such as driving speed indication and travel tracking.

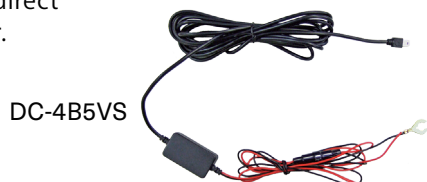


HG-GP200

*NX-DR W22 needs option HX-GP200.

DirectPowerConnection

Optional Direct Connection wiring cable allows the users to take power supply for the drive recorder direct from battery of the car.



DC-4B5VS



Front Camera installation image



Rear Camera installation image

Specifications

Item Number	NX-DR W22	NX-DR W22 PLUS
Type	2 cameras (Front / Rear)	
Screen size (Inch)	1.5	
Maximum recording time (Approx.)	1 hours 40 minutes *with 16GB SD	
Recording method	<ul style="list-style-type: none"> Continuous Event (G-sensor, manual) 	
Maximum recording angle (Approx.) Horizontal/Vertical/Diagonal	Front : 115° / 60° / 140° Rear : 105° / 58° / 130°	
Recording Resolution	1920x1080(Full HD)Front only 1280x720(HD)	
Compatible Recording Media	microSDHC card 8-32GB (Class10 or higher)	
Format free function	—	
Recording format	MOV H.264	
Frame rate (fps)	Front : 27.5 / Rear : 25	
GPS function	Optional (HX-GP200)	Included
G-Sensor	OFF / adjustable from 1 to 3 levels	
Image Sensor	Front: 2.0 mega pixel CMOS Rear: 1.0 mega pixel CMOS	
Image correction	WDR (Front camera)	
Overspeed warning	—	
Lane departure function	—	
Distance warning	—	
Departure delay warning	—	
Parking monitoring function	—	
Language	Japanese / English	
Sound	ON/OFF available	
LED signal support	○	
Noise Interference Prevention	—	
Attached power cable	Cigar Plug Power Cable	
Supply voltage	DC 12/24V	
Backup power	Super capacitor	
Operating temperature range	-10 ~ +60°C	
Country of Origin	Made in Japan	
Rear camera Cable length (Approx.)	Approx. 9.9m	
Compatibility of Direct connection wiring cable	○ ※Optional DC-4B5VS required	
Remarks	—	

* Specifications and contents on this brochure subject to change without notice or obligation.

Please contact us.

F.R.C. INTERNATIONAL CO., LTD.

2-3-8, Kisonishi, Machida-shi, Tokyo, 194-0037, JAPAN
TEL : +81-42-793-0477 FAX : +81-42-793-7742

Japanese Website



www.frc-net.co.jp

English Website



www.frc-net.co.jp/firstcom

Youtube Site



www.youtube.com/
@frcinternational

Copyright FRC International Co., Ltd., Tokyo, Japan (Hereinafter "FRC"). All right reserved. Although FRC has designed this brochure to be as accurate as possible, we reserve the right to make changes at any time to our equipment line, optional accessories, specifications, standard accessories, or availability of any such devices we manufacture and distribute. Please note that certain products and accessories may not be available in all countries of distribution therefore consult your Authorized Dealer for product availability and pricing. Colors of images herein may appear slightly different from actual products due to print.